

# Fitting Instructions

## BA 8902

Side Steps suitable for Land Rover  
Defender 90 vehicles



## Kit

1 x Side Steps (pair)	16 x Washers
6 x Bolts M8x25	2 x Clamp Plate
2 x Bolts M8x35	8 x M8 Nyloc Nuts

## Instructions

1. All holes should already exist on chassis but some drilling may be required.
2. Remove nut from bulkhead and retain bolt (1). Ensure the bolt has the threaded end towards the rear of the vehicle to ease fitting.
3. Offer the step up to the bolt. Ensure that the rear lines up with the rear outrigger.
4. Refit the bulkhead nut but only by a few threads.
5. Using the clamp plate (2), and the longer bolts, clamp the step through the large hole in the outrigger. Do not tighten at this time.
6. Add the side bolt (3), hole may need drilling, and movement of the step may be necessary to locate the hole.
7. Then tighten all the bolts on the step.

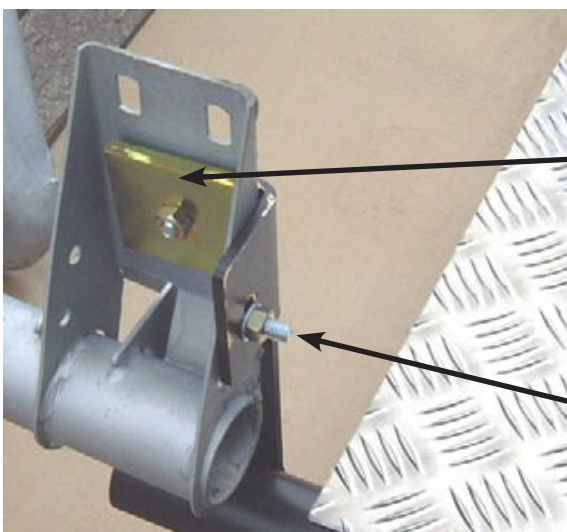
**Bulkhead bolt  
and nut (1)**



Front mounting – bulkhead is not on chassis shown.

**Clamp plate and  
long bolt (2)**

**Side bolt (3)**



Rear Mounting showing outrigger

Fitting Instructions: BMNR291118