

START HERE!

READ ME FIRST

Don't be a hero and muscle through this installation without reading these fitting instructions first! Improper installation of this gear may void certain aspects of your warranty.

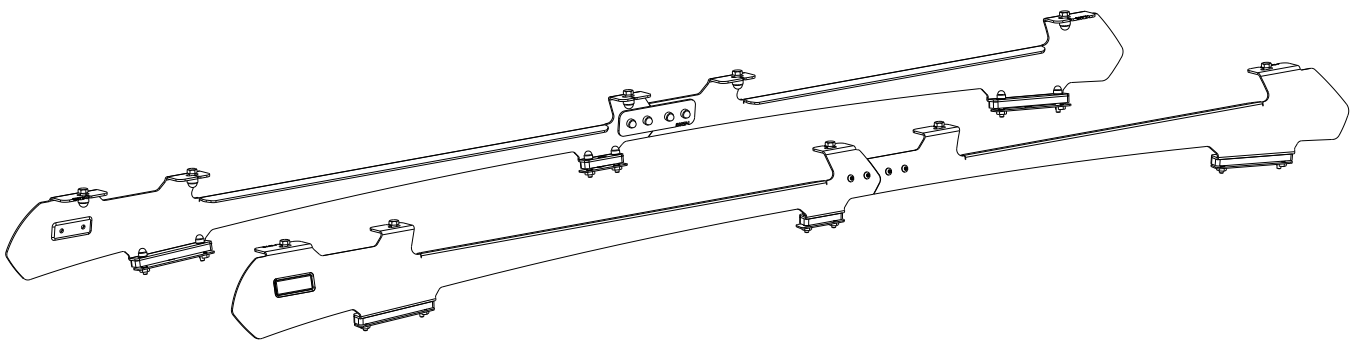
Before you begin, take a moment and open all your Front Runner rack kit boxes and gather the assembly instructions for the various components.

A complete kit will contain:

1. A Front Runner Mounting System specific to your vehicle
2. A Front Runner Rack Tray or Load Bar Slats

This document will guide you through the assembly of the mounting system and assist you in fitting the roof rack tray or load bars to your specific vehicle.

Please refer to the next page for a list of all the components, quantities and tools required.



IMPORTANT WARNING! ⚠

IT IS CRITICAL THAT ALL FRONT RUNNER PRODUCTS BE PROPERLY AND SECURELY ASSEMBLED AND ATTACHED TO YOUR VEHICLE. IMPROPER ATTACHMENT COULD RESULT IN AN AUTOMOBILE ACCIDENT, AND COULD CAUSE SERIOUS BODILY INJURY OR DEATH. YOU ARE RESPONSIBLE FOR ASSEMBLING AND SECURING ALL FRONT RUNNER PRODUCTS TO YOUR VEHICLE, CHECKING THE ATTACHMENTS PRIOR TO USE, AND PERIODICALLY INSPECTING THE PRODUCTS FOR ADJUSTMENT, WEAR AND DAMAGE. THEREFORE, YOU MUST READ AND UNDERSTAND ALL OF THE INSTRUCTIONS AND PRECAUTIONS SUPPLIED WITH YOUR FRONT RUNNER PRODUCT PRIOR TO INSTALLATION OR USE. IF YOU DO NOT UNDERSTAND ALL OF THE INSTRUCTIONS AND CAUTIONS, OR IF YOU HAVE NO MECHANICAL EXPERIENCE AND ARE NOT THOROUGHLY FAMILIAR WITH THE INSTALLATION PROCEDURES, YOU SHOULD HAVE THE PRODUCT INSTALLED BY A PROFESSIONAL INSTALLER OR OTHER QUALIFIED PERSONNEL.

NOTE: Front Runner will not be responsible for any damage caused by the failure to install the product according to these instructions.

Please call us if you have any questions about the installation of this product.



1 GET ORGANIZED

IN THE BOX

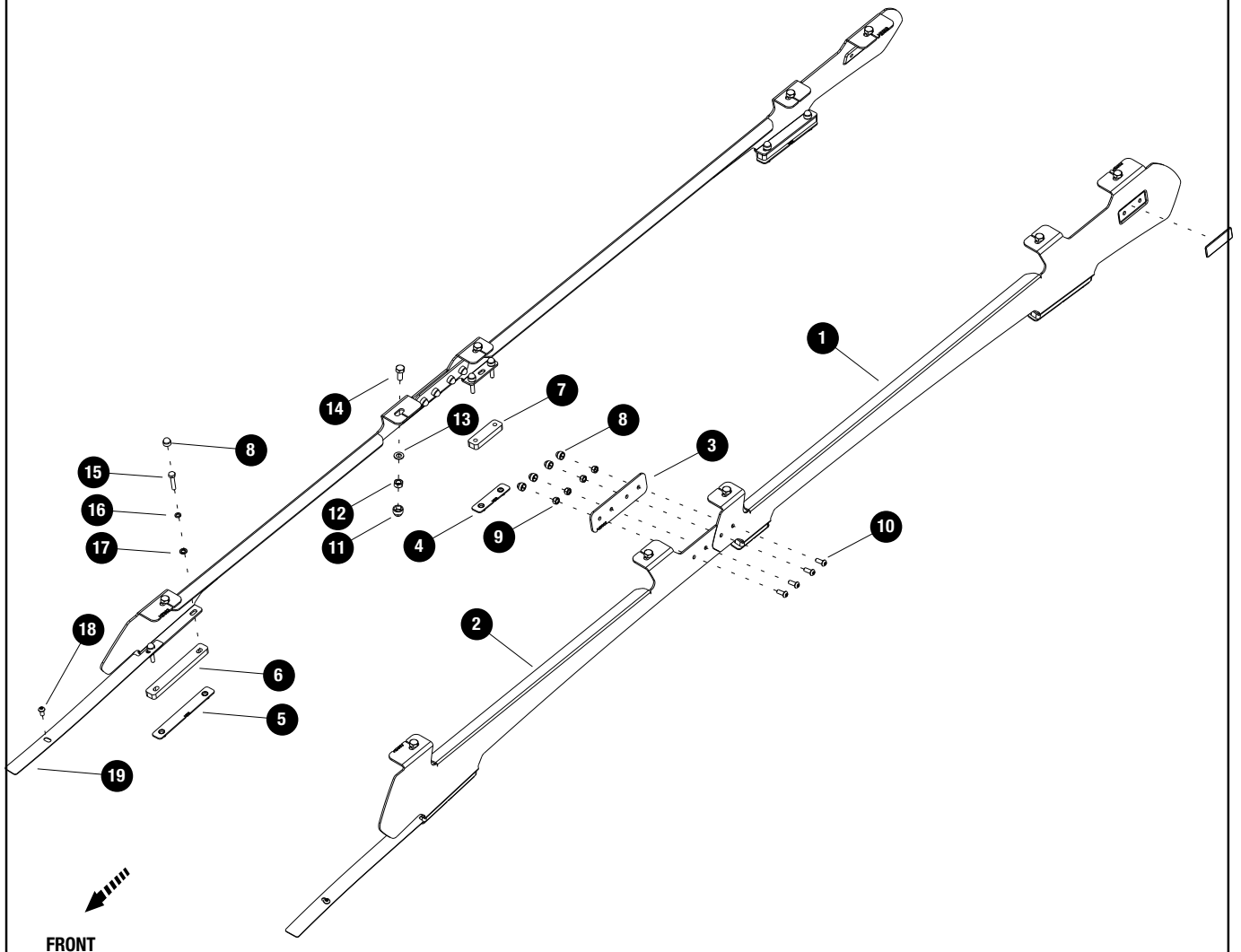
1	2 X	Foot Rail Rear - 1LH & 1RH
2	2 X	Foot Rail Front - 1LH & 1RH
3	2 X	Joiner Plate
4	2 X	Short Nut Plate
5	4 X	Long Nut Plate
6	4 X	Long Spacer
7	2 X	Short Spacer
8	20 X	M6 Nut Cap
9	8 X	M6 Nyloc Nut
10	8 X	M6 x 16 Button Head Bolt
11	10 X	M8 Nut Plate
12	10 X	M8 Nyloc Nut
13	10 X	M8 x 16 x 1.6 Flat Washer

14	10 X	M8 x 20 Hex Bolt
15	12 X	M6 x 35 Hex Bolt
16	12 X	M6 Spring Washer
17	12 X	M6 x 12 x 1 Flat Washer
18	2 X	M6 x 12 Button Head Bolt
19	2 X	Ditch Trim

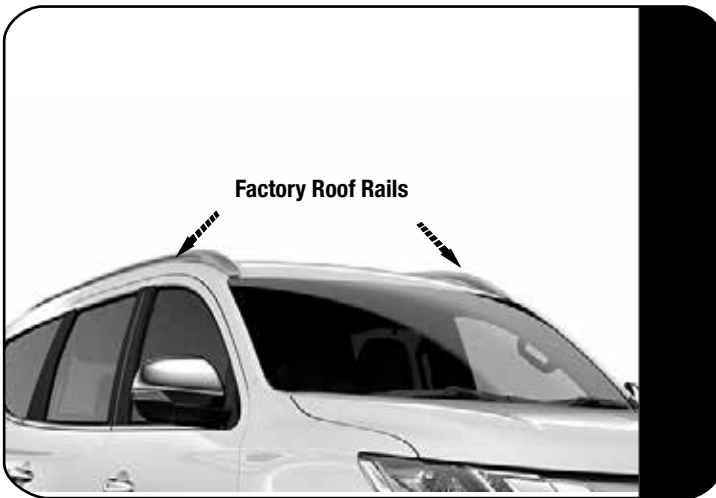
TOOLS NEEDED



FIGURE 1.1



2.1

**Tightening Torque:**

M6 : 8-10Nm / 5.9 ft lb - 7.38 ft lb

M8 : 15-20Nm / 11.06 ft lb - 14.75 ft lb



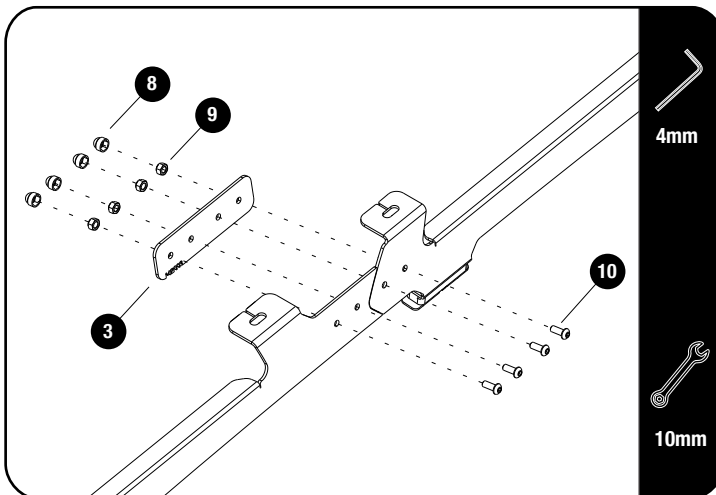
To do this fitment you first need to remove the factory rails and lower the interior roof lining before moving to the next step. Check how to online.



Remove the double OEM saddle brackets located in the front and rear of the ditch and the single saddle bracket located in the middle.

NOTE: Leave the front and rear most single OEM saddle brackets in place.

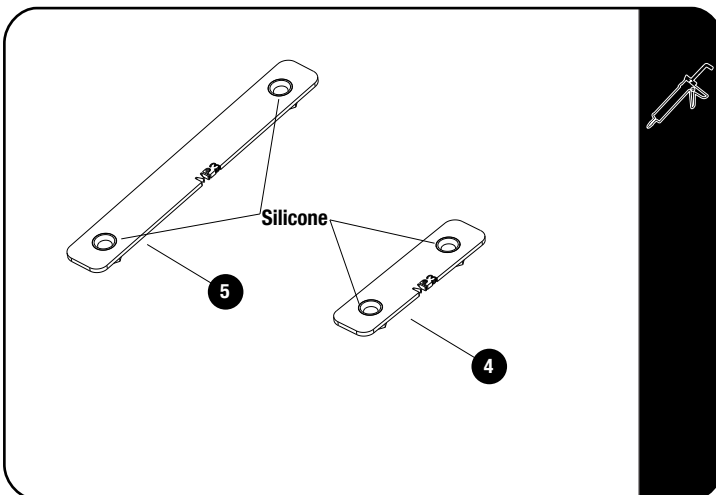
2.2



Assemble the Front and Rear Foot Rail (Items 1 and 2) with the Joiner Plate (Item 3) using M6 x 16 Button Head Bolts and M6 Nyloc Nuts (Items 9 & 10) as shown.

Place M6 Nut Caps (Item 8) on the Nyloc Nuts.

2.3



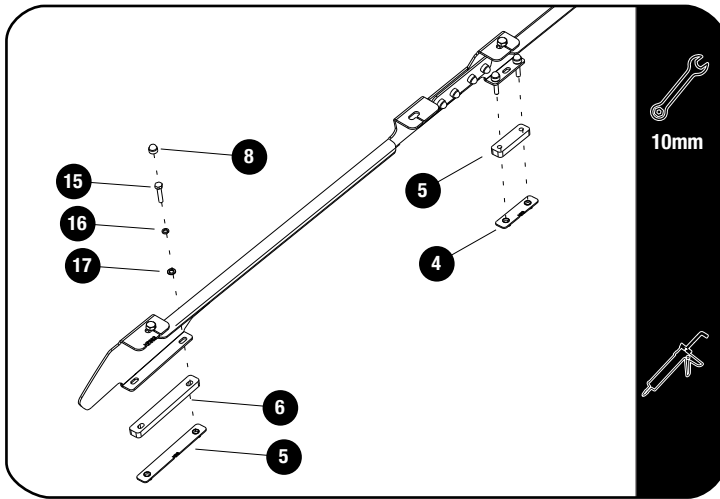
Apply a bead of silicone on the six Nut Plates (Items 4 & 5). This will bond the Nut Plates in place, so that the headliner does not need to be removed in future, should you want to remove the rack.

See 2.4 for Foot Rail fitment.

2

FIT AND SECURE

2.4



Tightening Torque:

M6 : 8-10Nm / 5.9 ft lb - 7.38 ft lb

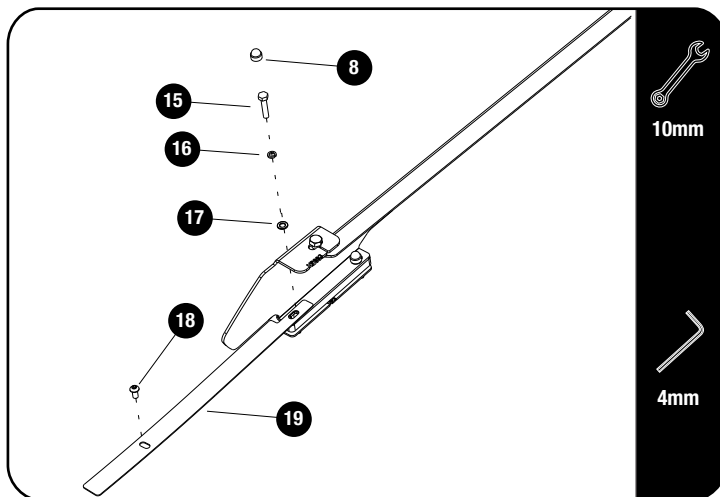


Place silicone around each hole where you have removed the OEM saddle brackets from the ditch in 2.1.

Place the Spacers (Items 6 & 7) over the holes. The Short Spacer (Item 5) go in the middle and the Long Spacers (Item 6) go on the front and rear holes.

Place the Foot Rail Assemblies on the Spacers and secure using the M6 x 35 Hex Bolts, M6 Spring Washers, M6 x 12 x 1 Flat Washers and Nut Plates (Items 4, 5, 15, 16 & 17) as shown.

2.5



Secure the Ditch Trim (Item 19) using one M6 x 30 Hex Bolt, M6 Spring Washer, M6 x 12 x 1 Flat Washer and one M6 x 12 Button Head Bolt (Items 15, 16, 17 & 18).

The M6 x 12 Button Head Bolt will secure into the front most OEM saddle bracket.

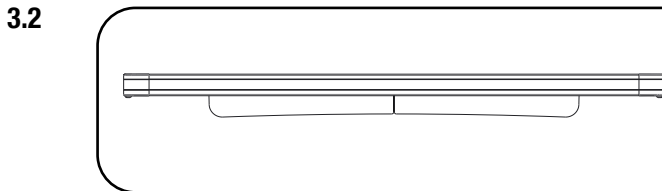


NOTE: You can form the Ditch trim slightly by hand.

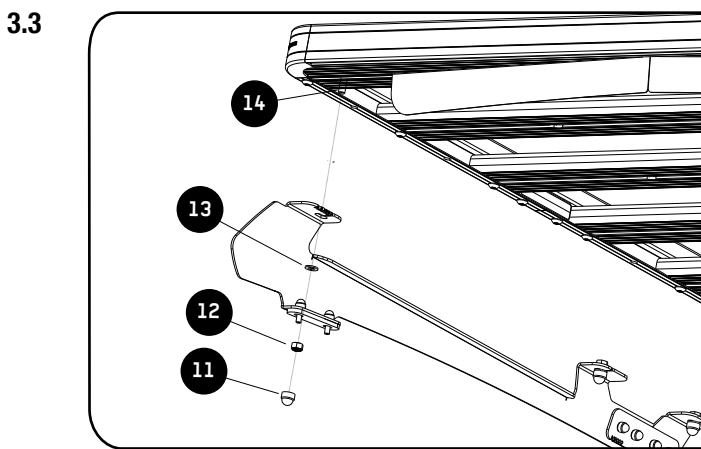
Place M6 Nut Caps (Item 8) over all hex bolts.

3 FIT AND SECURE

3.1 Refer to RRSUNI when assembling your Slimline II Tray.



Make sure that the wind deflector is installed before you proceed to the next step.



Tightening Torque:

M8 : 15-20Nm / 11.06 ft lb - 14.75 ft lb



Fit your roof rack to the Foot Rails using M8 x 20 Hex Bolts, M8 x 16 x 1.6SS Flat Washers and M8 Nyloc Nuts (Items 12, 13 & 14) as shown.

Center the Rack and fully tighten. Place M8 Nut Caps (Item 11) over all M8 Nyloc Nuts.

4 INSTALL OTHER VEHICLE AND RACK ACCESSORIES

Now's the time to visit your favorite Front Runner dealer in person or online.

IMPORTANT!

FRONT RUNNER RACK KITS OFTEN HAVE A HIGHER LOAD RATING THAN THE VEHICLES THEY ARE MOUNTED TO. PLEASE REFER TO YOUR SPECIFIC VEHICLE MANUFACTURER FOR A RECOMMENDED ROOF RATING. FRONT RUNNER CANNOT BE RESPONSIBLE FOR IMPROPER LOADING BEYOND THE VEHICLE MANUFACTURER'S STATED LOAD CAPACITY.

Be sure to tag us. We love to see our gear in action! #FrontRunnerOutfitters #BornToRoam

Share your adventures on: