

START HERE!

READ ME FIRST

Don't be a hero and muscle through this installation without reading these fitting instructions first! Improper installation of this gear may void certain aspects of your warranty.

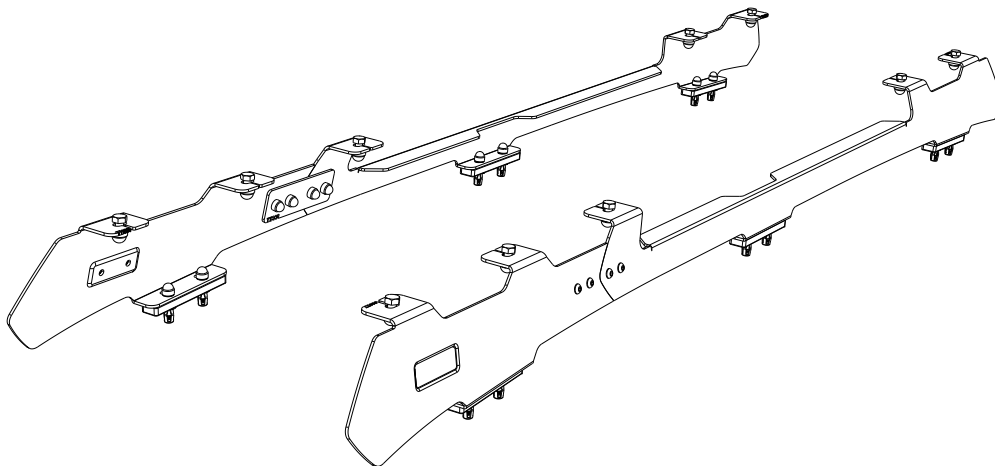
Before you begin, take a moment and open all your Front Runner rack kit boxes and gather the assembly instructions for the various components.

A complete kit will contain:

1. A Front Runner Mounting System specific to your vehicle
2. A Front Runner Rack Tray or Load Bar Slats

This document will guide you through the assembly of the mounting system and assist you in fitting the roof rack tray or load bars to your specific vehicle.

Please refer to the next page for a list of all the components, quantities and tools required.



IMPORTANT WARNING! ⚠️

IT IS CRITICAL THAT ALL FRONT RUNNER PRODUCTS BE PROPERLY AND SECURELY ASSEMBLED AND ATTACHED TO YOUR VEHICLE. IMPROPER ATTACHMENT COULD RESULT IN AN AUTOMOBILE ACCIDENT, AND COULD CAUSE SERIOUS BODILY INJURY OR DEATH. YOU ARE RESPONSIBLE FOR ASSEMBLING AND SECURING ALL FRONT RUNNER PRODUCTS TO YOUR VEHICLE, CHECKING THE ATTACHMENTS PRIOR TO USE, AND PERIODICALLY INSPECTING THE PRODUCTS FOR ADJUSTMENT, WEAR AND DAMAGE. THEREFORE, YOU MUST READ AND UNDERSTAND ALL OF THE INSTRUCTIONS AND PRECAUTIONS SUPPLIED WITH YOUR FRONT RUNNER PRODUCT PRIOR TO INSTALLATION OR USE. IF YOU DO NOT UNDERSTAND ALL OF THE INSTRUCTIONS AND CAUTIONS, OR IF YOU HAVE NO MECHANICAL EXPERIENCE AND ARE NOT THOROUGHLY FAMILIAR WITH THE INSTALLATION PROCEDURES, YOU SHOULD HAVE THE PRODUCT INSTALLED BY A PROFESSIONAL INSTALLER OR OTHER QUALIFIED PERSONNEL.

NOTE: Front Runner will not be responsible for any damage caused by the failure to install the product according to these instructions.

Please call us if you have any questions about the installation of this product.



1 GET ORGANIZED

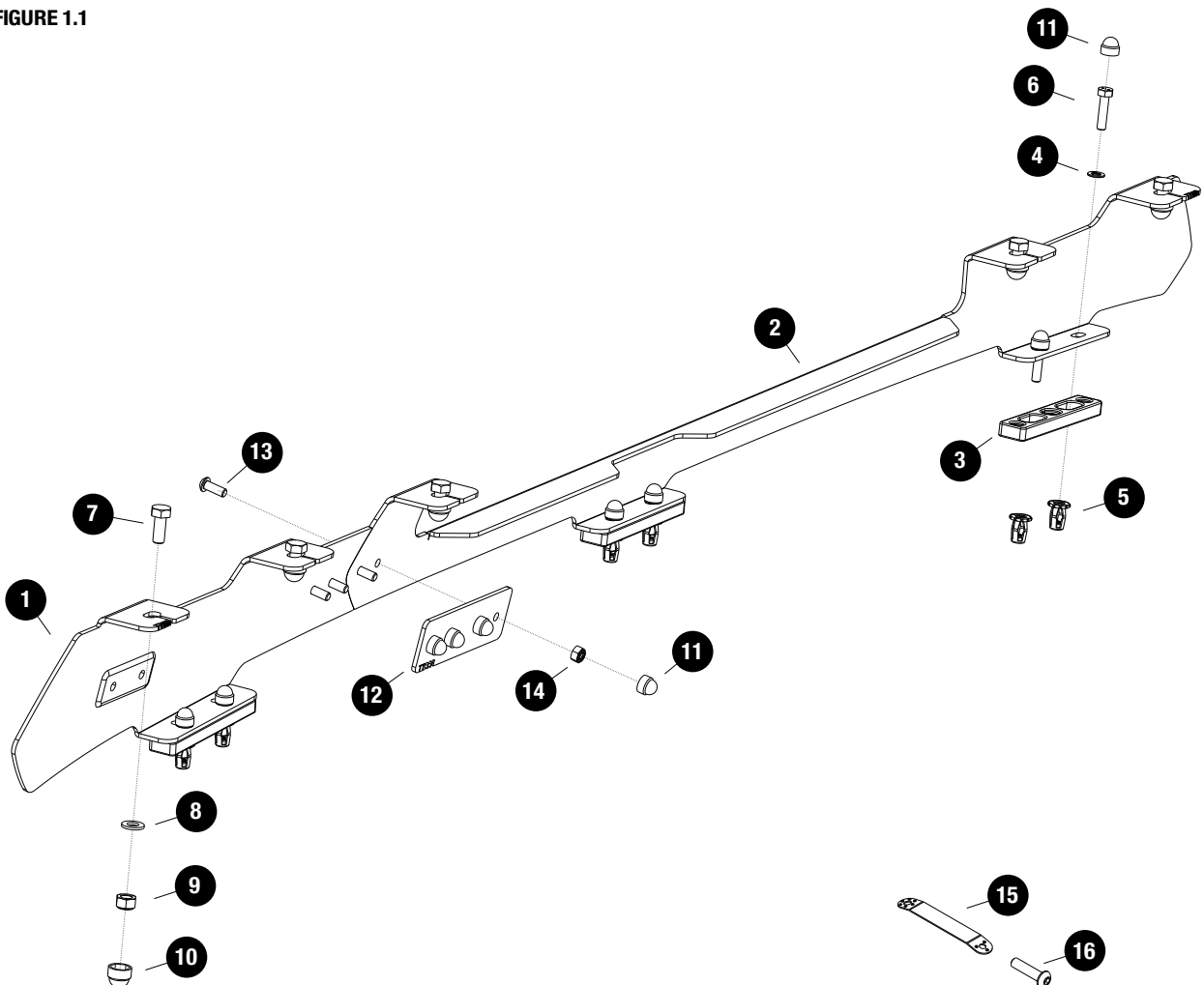
IN THE BOX

1	2 X	Front Foot Rail 1LH + 1RH
2	2 X	Rear Foot Rail 1LH + 1RH
3	6 X	Spacer
4	12 X	M6 x 12 x 1 Flat Washer
5	13 X	M6 Jack Nut
6	12 X	M6 x 25 Hex Head Bolt
7	10 X	M8 x 20 Hex Head Bolt
8	10 X	M8 x 16 x 1.6 Flat Washer
9	10 X	M8 Nyloc Nut
10	10 X	M8 Nut Cap
11	20 X	M6 Nut Cap
12	2 X	Joining Plate
13	8 X	M6 x 16 Button Head Bolt
14	8 X	M6 Nyloc Nut
15	1 X	Jack Nut Tool
16	1 X	M6 x 25 Button Head Bolt

TOOLS NEEDED



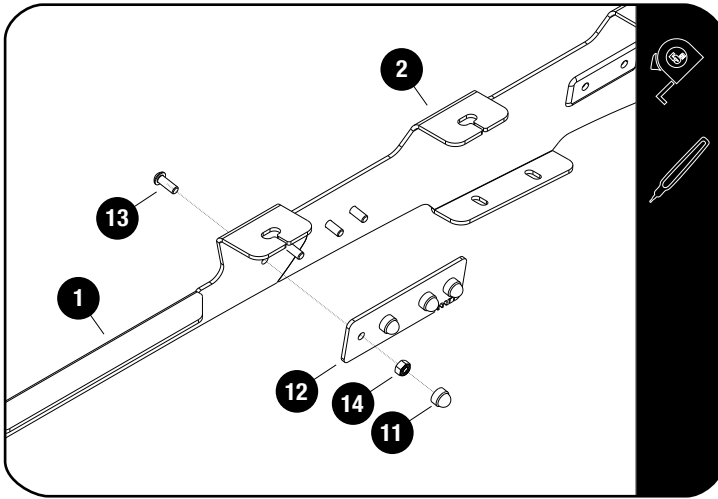
FIGURE 1.1



2

FIT AND SECURE

2.1



Assemble the Front and Rear Foot Rails (Items 1 & 2) using the Joiner Plate (Item 12), M6 x 16 Button Head Bolts and M6 Nyloc Nuts (Items 13 & 14) as shown. Fully tighten.

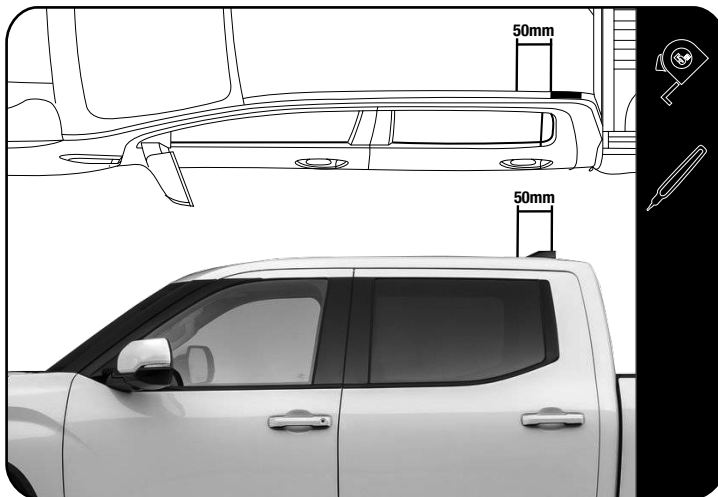
Place M6 Nut Caps (Item 11) over the Nyloc Nuts.



Tightening Torque:

M6 : 8-10Nm / 5.9 ft lb - 7.38 ft lb

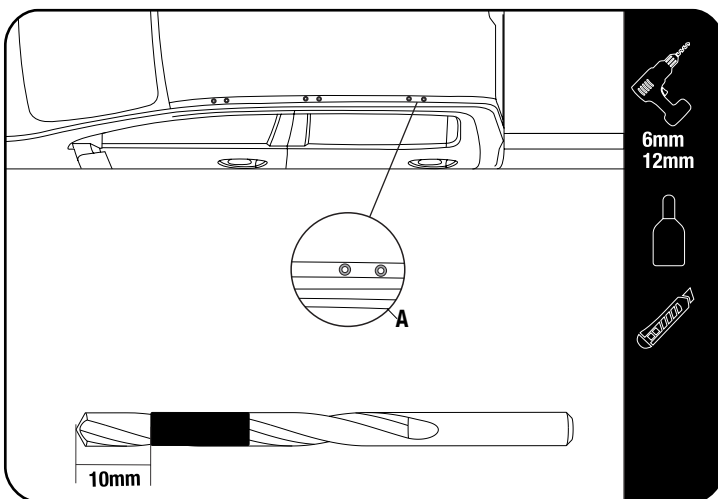
2.2



Measure 50mm forward from the mark on the Ditch trim and make a mark, do this on both LH / RH ditch trims.

Place the foot rail on the vehicles roof, align the rear slot centre with the mark you made and mark the remaining centres. Do this on both the LH & RH side.

2.3



TIP:

Place tape around the drill to mark a depth of 10mm, take care as there are airbags and canisters below.

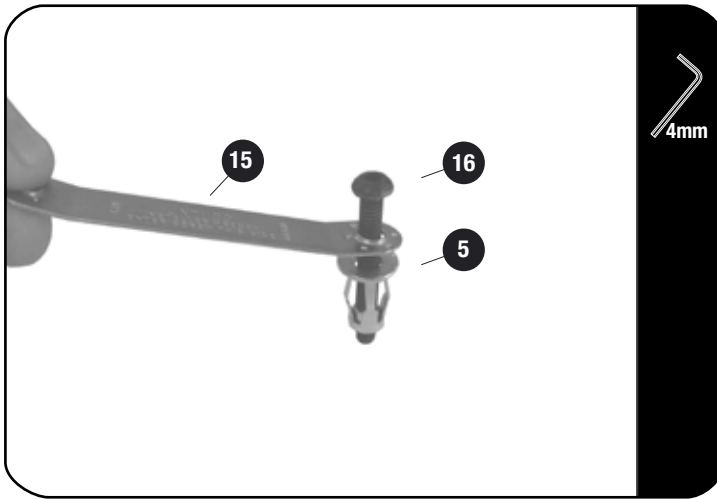


Drill the holes you marked, starting with a 6mm pilot hole before opening to a 12mm hole. There is no need for a lot of downward pressure. Let the drill do the work.

Remove +/- 5mm of the mastic around the holes drilled using a sharp knife to allow the Jack nut to fully seat onto the metal as shown in diagram A.

Clean the area around the holes drilled using a rag and denatured alcohol. Apply anti-rust around all the holes.

2.4

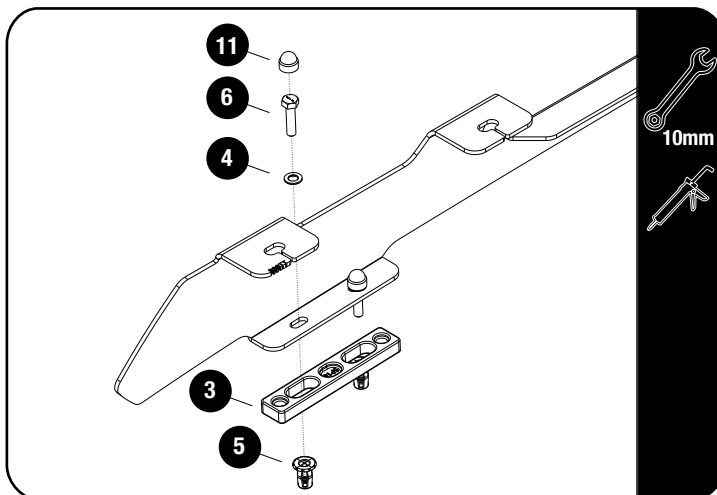


Insert a M6 x 30 Button Head Bolt (Item 16) into the Jack Nut Tool (Item 15) and loosely fit a Jack Nut (Item 5) to the button head bolt as shown.

Using the Jack Nut Tool and a M6 x 30 button head bolt, set the M6 jack nut into both the holes, opened in step 2.2.

Using a cordless driver and a 4mm allen cordless bit, set the jack nut into the hole while holding the Jack Nut Tool, to prevent the Jack Nut from turning.

2.5



Tightening Torque:

M8 : 15-20Nm / 11.06 ft lb - 14.75 ft lb



Place silicone around and over all the Jack nuts to insure a waterproof seal.

Place the spacers (Item 3) in the vehicles ditch, aligning the the spacers with the holes in the vehicles roof.

Place a bead of silicone along the threads of the M6 x 25 Hex Bolts and secure the rail using M6 x 25 Hex Bolts and M6 x 19 x 1 Flat Washers (Items 4 & 6).

Place M6 Nut Caps (Item 11) over all hex bolts.

3

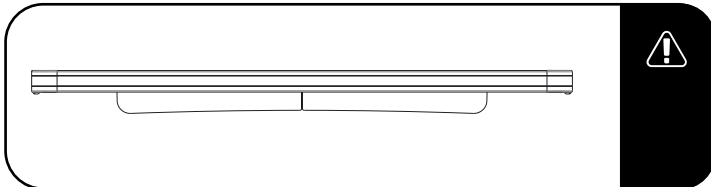
FIT AND SECURE

3.1

Refer to RRSUNI when assembling your Slimline II Tray.

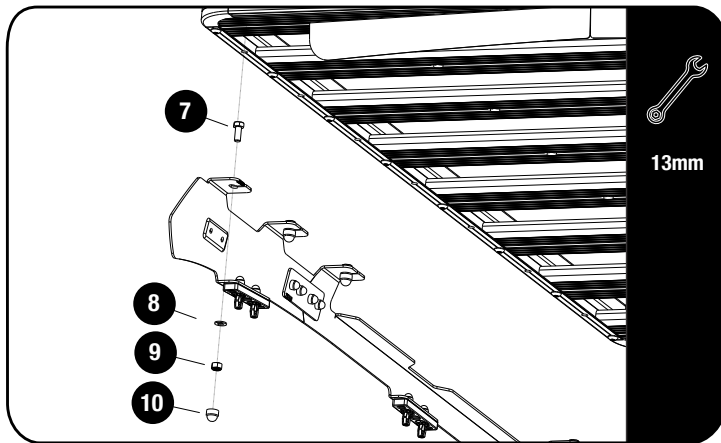


3.2



Make sure that the wind deflector is installed before you proceed to the next step.

3.3



Fit your roof rack to the Foot Rails using M8 x 20 Hex Bolts, M8 x 16 x 1.6SS Flat Washers and M8 Nyloc Nuts (Items 7, 9 & 10) as shown.

3.4

Center the rack and fully tighten all fasteners. Use M8 Nut Caps (Items 10) to finish off the nuts.



4

COMPLETION

4.1

Congratulations! You did it. Take a step back and admire your work!



5

INSTALL OTHER VEHICLE AND RACK ACCESSORIES

Now's the time to visit your favorite Front Runner dealer in person or online.

IMPORTANT!

FRONT RUNNER RACK KITS OFTEN HAVE A HIGHER LOAD RATING THAN THE VEHICLES THEY ARE MOUNTED TO. PLEASE REFER TO YOUR SPECIFIC VEHICLE MANUFACTURER FOR A RECOMMENDED ROOF RATING. FRONT RUNNER CANNOT BE RESPONSIBLE FOR IMPROPER LOADING BEYOND THE VEHICLE MANUFACTURER'S STATED LOAD CAPACITY.

Be sure to tag us. We love to see our gear in action! #FrontRunnerOutfitters #BornToRoam

Share your adventures on:   