

START HERE! READ ME FIRST

Don't be a hero and muscle through this installation without reading these fitting instructions first! Improper installation of this gear may void certain aspects of your warranty.

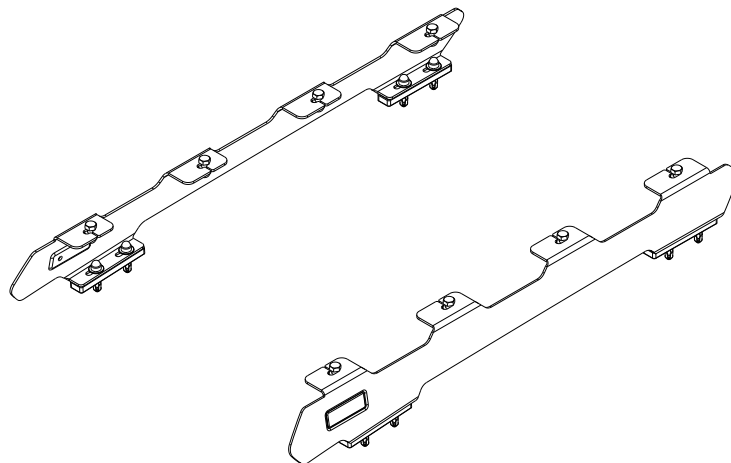
Before you begin, take a moment and open all your Front Runner rack kit boxes and gather the assembly instructions for the various components.

A complete kit will contain:

1. A Front Runner Mounting System specific to your vehicle
2. A Front Runner Rack Tray or Load Bar Slats

This document will guide you through the assembly of the mounting system and assist you in fitting the roof rack tray or load bars to your specific vehicle.

Please refer to the next page for a list of all the components, quantities and tools required.



IMPORTANT WARNING! ⚠️

IT IS CRITICAL THAT ALL FRONT RUNNER PRODUCTS BE PROPERLY AND SECURELY ASSEMBLED AND ATTACHED TO YOUR VEHICLE. IMPROPER ATTACHMENT COULD RESULT IN AN AUTOMOBILE ACCIDENT, AND COULD CAUSE SERIOUS BODILY INJURY OR DEATH. YOU ARE RESPONSIBLE FOR ASSEMBLING AND SECURING ALL FRONT RUNNER PRODUCTS TO YOUR VEHICLE, CHECKING THE ATTACHMENTS PRIOR TO USE, AND PERIODICALLY INSPECTING THE PRODUCTS FOR ADJUSTMENT, WEAR AND DAMAGE. THEREFORE, YOU MUST READ AND UNDERSTAND ALL OF THE INSTRUCTIONS AND PRECAUTIONS SUPPLIED WITH YOUR FRONT RUNNER PRODUCT PRIOR TO INSTALLATION OR USE. IF YOU DO NOT UNDERSTAND ALL OF THE INSTRUCTIONS AND CAUTIONS, OR IF YOU HAVE NO MECHANICAL EXPERIENCE AND ARE NOT THOROUGHLY FAMILIAR WITH THE INSTALLATION PROCEDURES, YOU SHOULD HAVE THE PRODUCT INSTALLED BY A PROFESSIONAL INSTALLER OR OTHER QUALIFIED PERSONNEL.

NOTE: Front Runner will not be responsible for any damage caused by the failure to install the product according to these instructions.

Please call us if you have any questions about the installation of this product.

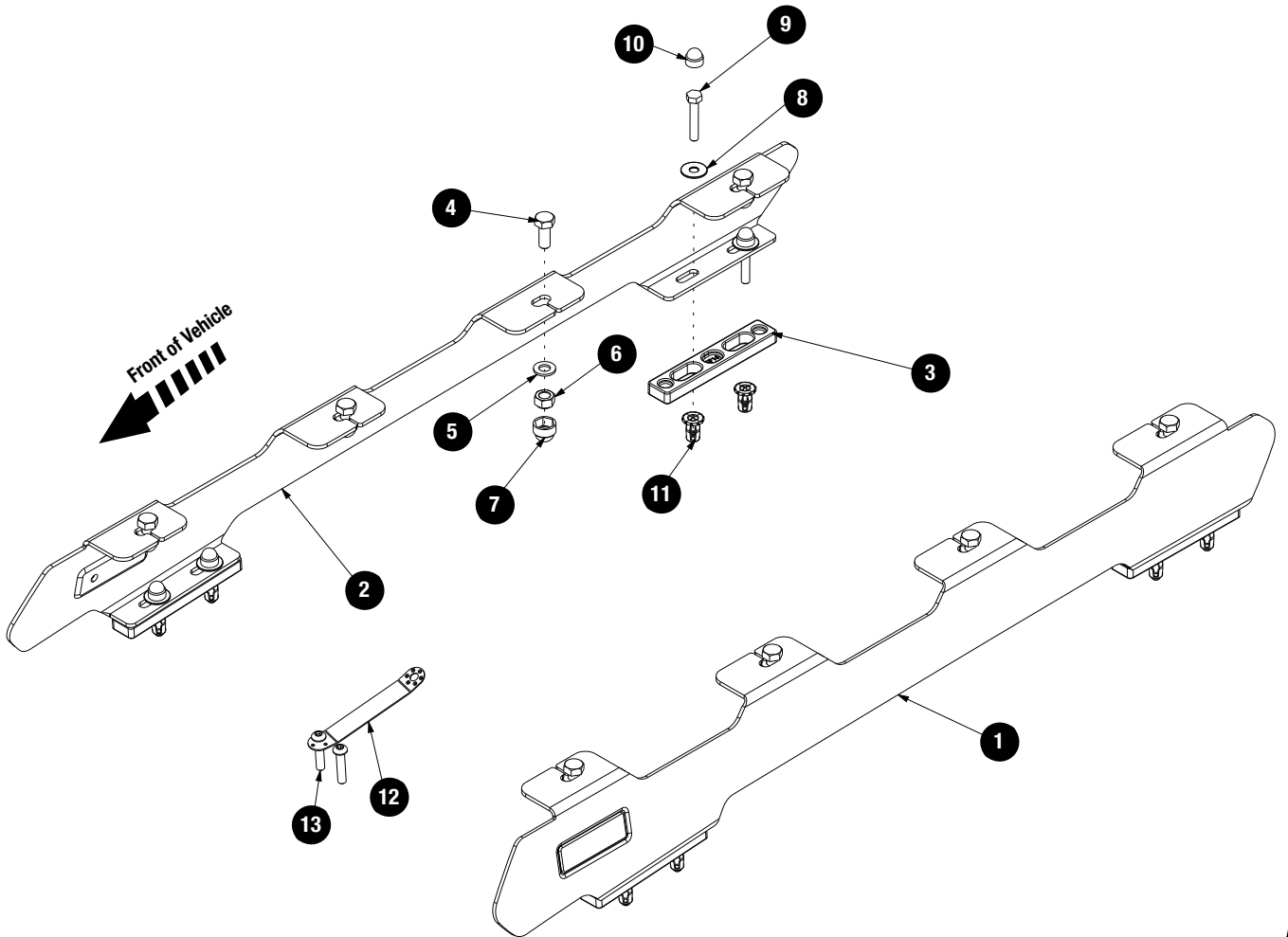
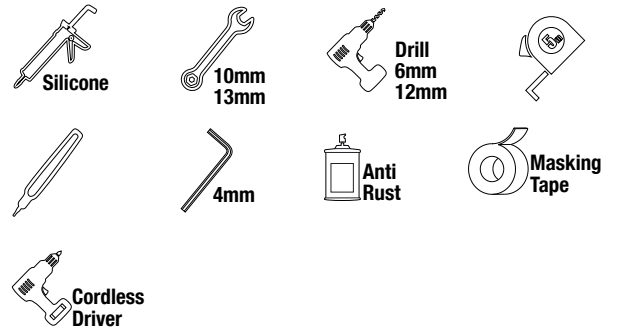


1 GET ORGANIZED

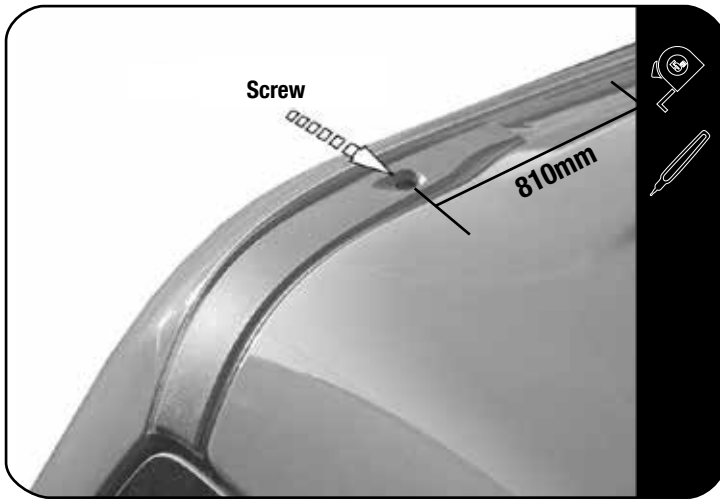
IN THE BOX

- | | | |
|----|-----|---------------------------|
| 1 | 1 X | Left Hand Side Foot Rail |
| 2 | 1 X | Right Hand Side Foot Rail |
| 3 | 4 X | Spacer |
| 4 | 8 X | M8 x 20 Hex Head Bolt |
| 5 | 8 X | M8 x 16 x 1.6 Flat Washer |
| 6 | 8 X | M8 Nyloc Nut |
| 7 | 8 X | M8 Nut Cap |
| 8 | 8 X | M6 x 19 x 1 Flat Washer |
| 9 | 8 X | M6 x 35 Hex Head Bolt |
| 10 | 8 X | M6 Nut Cap |
| 11 | 8 X | M6 Jack Nut |
| 12 | 1 X | Jack Nut Tool |
| 13 | 2 X | M6 x 30 Button Head Bolt |

TOOLS NEEDED



2.1



Apply masking tape along the length of the ditch. Locate the screw on the ditch molding at the rear of the cab.

Measure 810mm toward the front of the vehicle from the center of the screw. And make a mark in the center of the ditch. This will be the rear hole position of the Foot Rail.

2.2



Position the Foot Rail onto the vehicle. Align the center of the rear slot in the Foot Rail with the rear mark you made earlier in 2.1 and mark the remaining three slot centers.

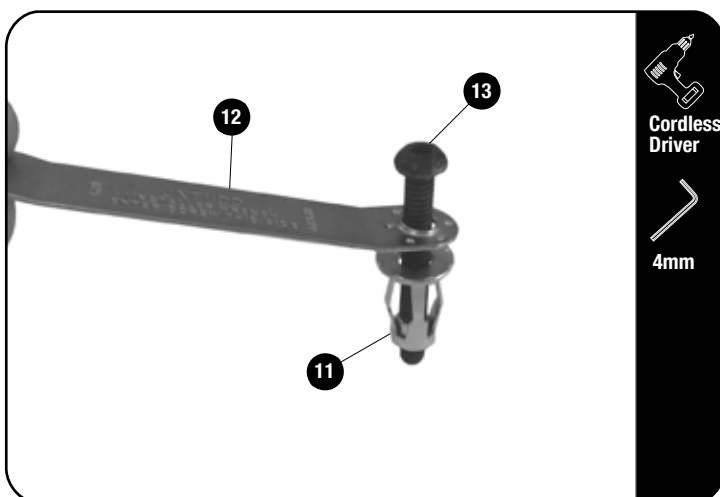
Remove the Foot Rail from the vehicle.

Drill a 6mm Pilot hole in the center of the markings. Open the holes using a 12mm drill bit.

Do this for both Left hand side and Right hand side.

Remove the mastic around the holes drilled with a sharp blade to allow the jack nut to seat fully onto the metal of the ditch.

2.3

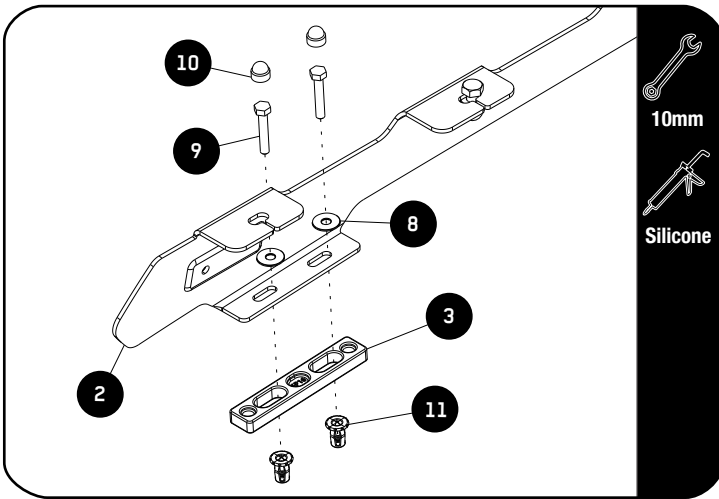


Insert an M6 button head bolt (Item 13) into the installer wrench (Item 12). Loosely fit a jack nut (Item 11) to the button head bolt as shown.

Using a cordless driver and a 4mm allen cordless bit, set the jack nut into the hole while holding onto the handle of the installer wrench.

Do this for all eight holes.

2.4



Fill the hole in the mastic with silicone to seal the jack nut around the outside of the collar and center.

Position the Spacers (Item 3) over the jack nuts inserted in 2.3.

Position the Foot Rail (Item 2) over the cab placing it on the spacers.

Place a bead of silicone along the threads of the M6x35 Hex Head Bolts (Item 9) and secure the rack using M6x35 Hex Head Bolts and M6x19x1 Flat Washers (Items 8). Fully tighten.

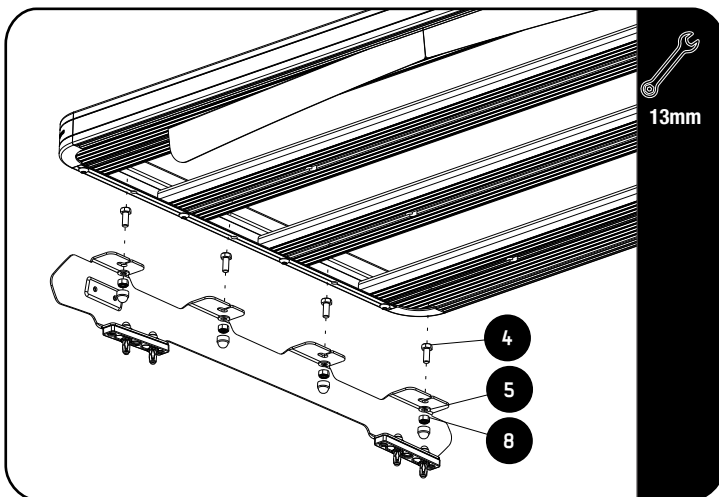
Place M6 Nut Caps (Item 10) over all Hex Bolts.



Tightening Torque:

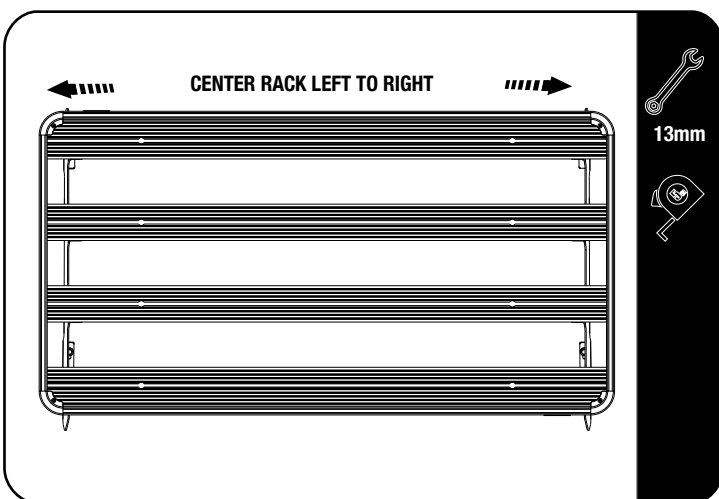
M6 : 8-10Nm / 5.9 ft lb - 7.38 ft lb

2.5



Loosely assemble your Rack to you Foot Rails using the M8 x 20 Hex Head Bolts (Item 4), M8 x 16 x 1.6 Flat Washers (Item 5) and M8 Nyloc Nuts (Item 8) as shown.

2.6



Center the rack left to right using a tape measure. When centered fully tighten the rack to the foot rails starting at one corner and moving to the opposite corner in a criss cross manner. This will keep the rack centered. Fully tighten all remaining bolts.

Finish off by placing the M8 nut caps over all the nuts.



Tightening Torque:

M8 : 15-20Nm / 11.06 ft lb - 14.75 ft lb

4

COMPLETION

4.1

Congratulations! You did it. Take a step back and admire your work!



5

INSTALL OTHER VEHICLE AND RACK ACCESSORIES

Now's the time to visit your favorite Front Runner dealer in person or online.

IMPORTANT!

FRONT RUNNER RACK KITS OFTEN HAVE A HIGHER LOAD RATING THAN THE VEHICLES THEY ARE MOUNTED TO. PLEASE REFER TO YOUR SPECIFIC VEHICLE MANUFACTURER FOR A RECOMMENDED ROOF RATING. FRONT RUNNER CANNOT BE RESPONSIBLE FOR IMPROPER LOADING BEYOND THE VEHICLE MANUFACTURER'S STATED LOAD CAPACITY.

Be sure to tag us. We love to see our gear in action! #FrontRunnerOutfitters #BornToRoam

Share your adventures on: 